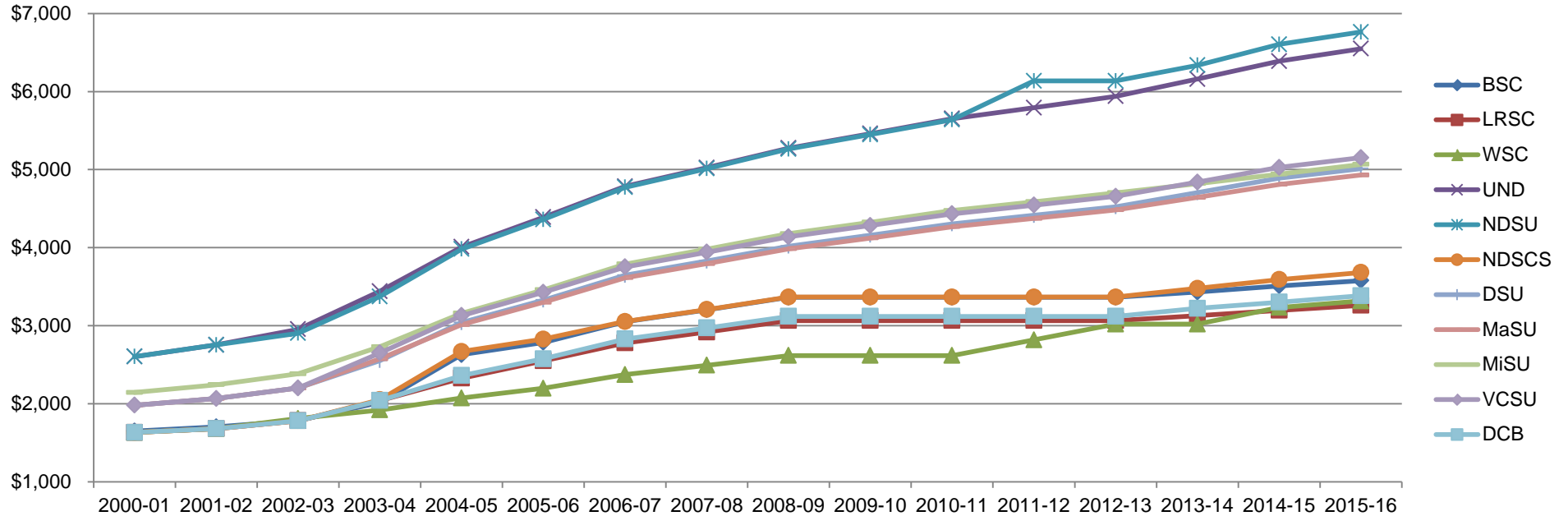


NORTH DAKOTA UNIVERSITY SYSTEM TUITION RATE INCREASES, STATE OPERATIONS FUNDING, AND STATE FACILITIES FUNDING

This memorandum provides historical information regarding tuition rates at North Dakota University System institutions. The memorandum also provides historical information regarding appropriations for University System institutions.

TUITION RATES

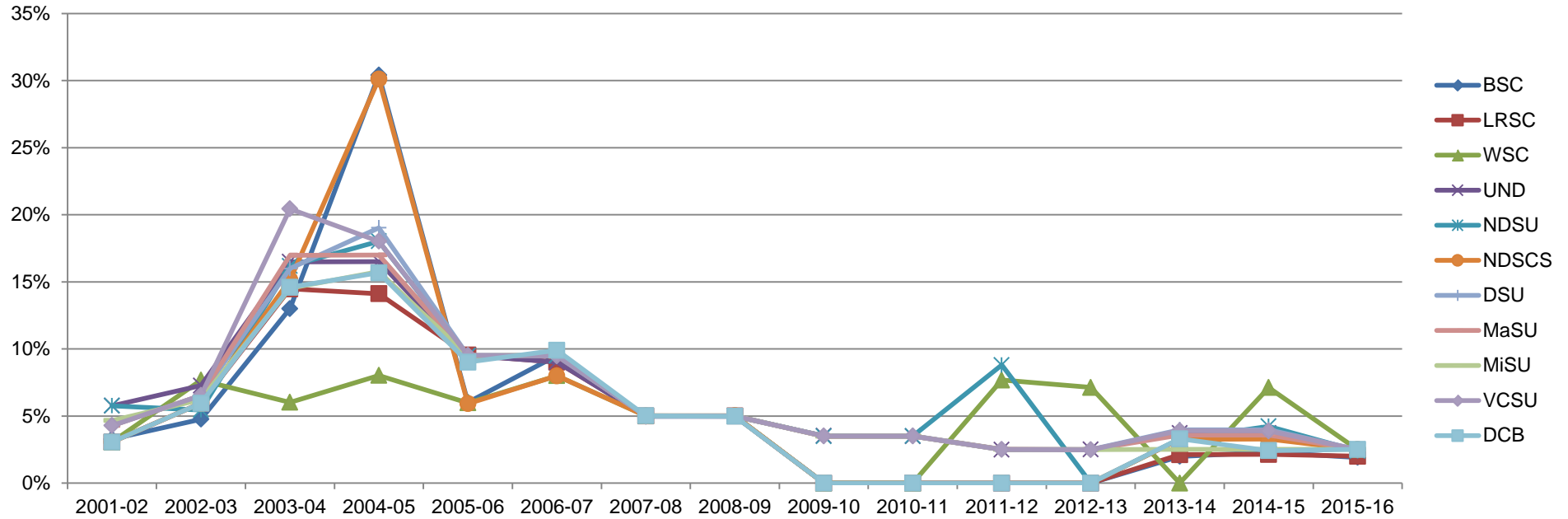
The following chart and schedule detail resident undergraduate tuition rates at University System institutions since the 2000-01 academic year:



	2000-01	2001-02	2002-03	2003-04	2004-05	2005-06	2006-07	2007-08	2008-09	2009-10	2010-11	2011-12	2012-13	2013-14	2014-15	2015-16
BSC	\$1,649	\$1,703	\$1,784	\$2,016	\$2,629	\$2,787	\$3,052	\$3,204	\$3,364	\$3,364	\$3,364	\$3,364	\$3,364	\$3,431	\$3,510	\$3,577
LRSC	\$1,632	\$1,682	\$1,782	\$2,040	\$2,328	\$2,550	\$2,780	\$2,919	\$3,065	\$3,065	\$3,065	\$3,065	\$3,065	\$3,130	\$3,197	\$3,261
WSC	\$1,632	\$1,682	\$1,811	\$1,920	\$2,074	\$2,198	\$2,374	\$2,493	\$2,618	\$2,618	\$2,618	\$2,819	\$3,020	\$3,020	\$3,235	\$3,316
UND	\$2,604	\$2,754	\$2,954	\$3,441	\$4,009	\$4,390	\$4,786	\$5,025	\$5,275	\$5,461	\$5,652	\$5,793	\$5,938	\$6,159	\$6,388	\$6,548
NDSU	\$2,604	\$2,754	\$2,904	\$3,374	\$3,982	\$4,360	\$4,774	\$5,013	\$5,264	\$5,448	\$5,639	\$6,135	\$6,135	\$6,336	\$6,604	\$6,762
NDSCS	\$1,632	\$1,682	\$1,782	\$2,052	\$2,670	\$2,828	\$3,054	\$3,207	\$3,368	\$3,368	\$3,368	\$3,368	\$3,368	\$3,478	\$3,592	\$3,682
DSU	\$1,982	\$2,067	\$2,202	\$2,554	\$3,040	\$3,329	\$3,646	\$3,828	\$4,019	\$4,160	\$4,306	\$4,414	\$4,524	\$4,704	\$4,891	\$5,013
MaSU	\$1,982	\$2,067	\$2,202	\$2,576	\$3,014	\$3,300	\$3,614	\$3,795	\$3,985	\$4,124	\$4,268	\$4,375	\$4,484	\$4,644	\$4,810	\$4,930
MiSU	\$2,144	\$2,244	\$2,384	\$2,730	\$3,160	\$3,460	\$3,790	\$3,980	\$4,179	\$4,325	\$4,476	\$4,588	\$4,703	\$4,821	\$4,942	\$5,066
VCSU	\$1,982	\$2,067	\$2,202	\$2,652	\$3,130	\$3,428	\$3,753	\$3,941	\$4,138	\$4,283	\$4,433	\$4,544	\$4,657	\$4,839	\$5,027	\$5,153
DCB	\$1,632	\$1,682	\$1,782	\$2,042	\$2,362	\$2,575	\$2,830	\$2,972	\$3,120	\$3,120	\$3,120	\$3,120	\$3,120	\$3,223	\$3,301	\$3,384

Resident Undergraduate Tuition Rate Increases

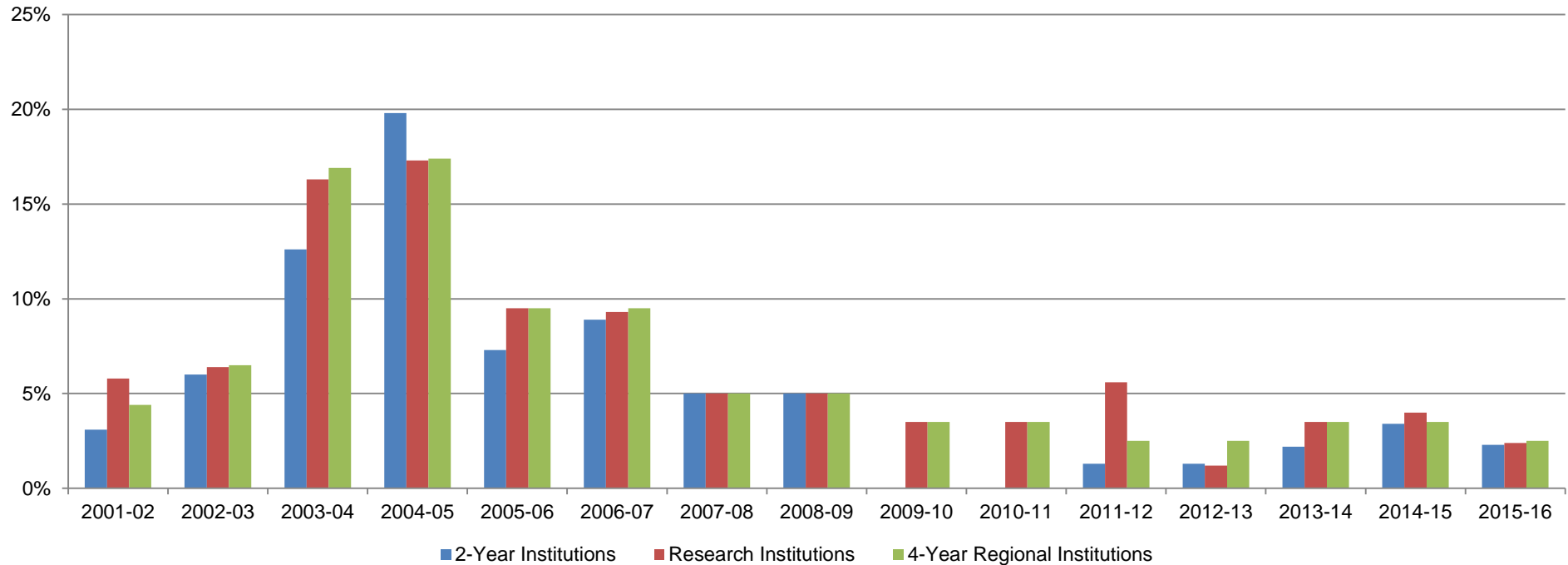
The following chart and schedule detail the percentage increases in undergraduate tuition rates at each University System institution since the 2001-02 academic year:



	2001-02	2002-03	2003-04	2004-05	2005-06	2006-07	2007-08	2008-09	2009-10	2010-11	2011-12	2012-13	2013-14	2014-15	2015-16
BSC	3.3%	4.8%	13.0%	30.4%	6.0%	9.5%	5.0%	5.0%	0.0%	0.0%	0.0%	0.0%	2.0%	2.3%	1.9%
LRSC	3.1%	5.9%	14.5%	14.1%	9.5%	9.0%	5.0%	5.0%	0.0%	0.0%	0.0%	0.0%	2.1%	2.1%	2.0%
WSC	3.1%	7.7%	6.0%	8.0%	6.0%	8.0%	5.0%	5.0%	0.0%	0.0%	7.7%	7.1%	0.0%	7.1%	2.5%
UND	5.8%	7.3%	16.5%	16.5%	9.5%	9.0%	5.0%	5.0%	3.5%	3.5%	2.5%	2.5%	3.7%	3.7%	2.5%
NDSU	5.8%	5.4%	16.2%	18.0%	9.5%	9.5%	5.0%	5.0%	3.5%	3.5%	8.8%	0.0%	3.3%	4.2%	2.4%
NDSCS	3.1%	5.9%	15.2%	30.1%	5.9%	8.0%	5.0%	5.0%	0.0%	0.0%	0.0%	0.0%	3.3%	3.3%	2.5%
DSU	4.3%	6.5%	16.0%	19.0%	9.5%	9.5%	5.0%	5.0%	3.5%	3.5%	2.5%	2.5%	4.0%	4.0%	2.5%
MaSU	4.3%	6.5%	17.0%	17.0%	9.5%	9.5%	5.0%	5.0%	3.5%	3.5%	2.5%	2.5%	3.6%	3.6%	2.5%
MiSU	4.7%	6.2%	14.5%	15.8%	9.5%	9.5%	5.0%	5.0%	3.5%	3.5%	2.5%	2.5%	2.5%	2.5%	2.5%
VCSU	4.3%	6.5%	20.4%	18.0%	9.5%	9.5%	5.0%	5.0%	3.5%	3.5%	2.5%	2.5%	3.9%	3.9%	2.5%
DCB	3.1%	5.9%	14.6%	15.7%	9.0%	9.9%	5.0%	5.0%	0.0%	0.0%	0.0%	0.0%	3.3%	2.4%	2.5%

Average Tuition Rate Increases by Institution Type

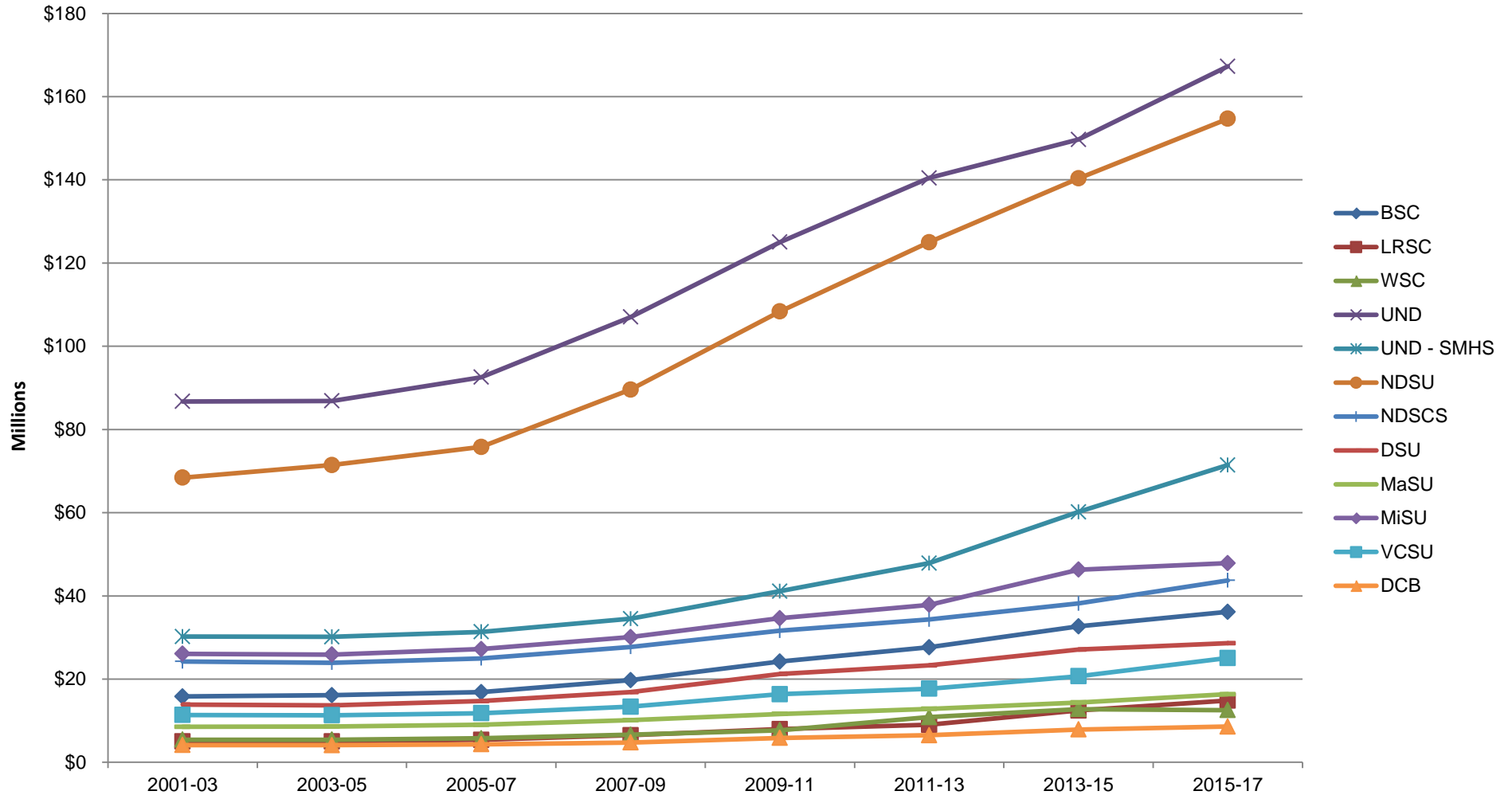
The chart and schedule below detail the average undergraduate tuition rate increases at research institutions, 4-year regional institutions, and 2-year institutions since the 2001-02 academic year:



	2001-02	2002-03	2003-04	2004-05	2005-06	2006-07	2007-08	2008-09	2009-10	2010-11	2011-12	2012-13	2013-14	2014-15	2015-16
2-year institutions															
Annual increase	\$51	\$102	\$226	\$399	\$175	\$230	\$141	\$148	\$0	\$0	\$40	\$40	\$69	\$111	\$77
Percent increase	3.1%	6.0%	12.6%	19.8%	7.3%	8.9%	5.0%	5.0%	0.0%	0.0%	1.3%	1.3%	2.2%	3.4%	2.3%
Research institutions															
Annual increase	\$150	\$175	\$479	\$588	\$380	\$405	\$239	\$251	\$185	\$191	\$319	\$73	\$211	\$249	\$159
Percent increase	5.8%	6.4%	16.3%	17.3%	9.5%	9.3%	5.0%	5.0%	3.5%	3.5%	5.6%	1.2%	3.5%	4.0%	2.4%
4-year regional institutions															
Annual increase	\$89	\$136	\$381	\$458	\$293	\$322	\$185	\$194	\$143	\$148	\$110	\$112	\$160	\$166	\$123
Percent increase	4.4%	6.5%	16.9%	17.4%	9.5%	9.5%	5.0%	5.0%	3.5%	3.5%	2.5%	2.5%	3.5%	3.5%	2.5%

STATE APPROPRIATIONS FOR THE UNIVERSITY SYSTEM Operations Funding for Institutions

The chart and schedule below detail appropriations since the 2001-03 biennium for operations of University System institutions. The amounts shown include one-time and ongoing appropriations from the general fund and the student loan trust fund for institutions. The amounts exclude funding for capital projects and repairs.



	2001-03	2003-05	2005-07	2007-09	2009-11	2011-13	2013-15	2015-17
BSC	\$15,800,887	\$16,112,327	\$16,865,548	\$19,733,680	\$24,204,005	\$27,628,314	\$32,653,654	\$36,163,153
LRSC	5,032,456	5,032,682	5,389,989	6,511,348	7,956,210	9,003,614	12,429,097	14,832,189
WSC	5,424,874	5,436,977	5,752,997	6,622,504	7,696,999	10,849,685 ¹	12,783,506 ¹	12,550,464 ¹
UND	86,740,336	86,862,537	92,551,602	107,011,830	125,036,783	140,457,484	149,683,005	167,274,338 ²
UND - SMHS	30,212,510	30,165,865	31,361,002	34,488,501	41,115,401	47,847,971 ³	60,177,396 ³	71,437,396 ³
NDSU	68,412,865	71,444,066	75,804,650	89,593,630	108,367,622	125,015,305	140,341,540	154,678,296
NDSUS	24,247,302	23,936,824	24,986,828	27,740,368	31,607,155	34,320,009	38,181,456	43,719,385
DSU	13,860,931	13,669,533	14,711,627	16,856,110	21,223,737 ⁴	23,283,539 ⁴	27,099,227 ⁴	28,606,853 ⁴
MaSU	8,515,748	8,602,335	9,003,630	10,115,065	11,629,616	12,830,787 ⁵	14,364,424	16,380,153
MiSU	26,061,907	25,890,346	27,215,849	30,095,122	34,623,707	37,838,974	46,310,211 ⁶	47,858,561
VCSU	11,365,513	11,304,672	11,806,526	13,350,137	16,368,001	17,694,741	20,691,135	25,061,349
DCB	4,137,614	4,102,856	4,334,460	4,759,548	5,862,372	6,489,750	7,890,543	8,589,609
Total	\$299,812,943	\$302,561,020	\$319,784,708	\$366,877,843	\$435,691,608	\$493,260,173	\$562,605,194	\$627,151,746

¹The amount shown for WSC for the 2011-13 biennium includes one-time funding of \$2 million from the general fund for expenses due to the impact of oil and gas development. Ongoing funding of \$2.5 million from the general fund was appropriated for the 2013-15 biennium for extraordinary campus needs resulting from energy development. The \$2.5 million was removed from the base budget and provided as one-time funding for extraordinary campus needs for the 2015-17 biennium.

²The 2015-17 biennium amount shown for UND has not been adjusted to reflect a portion of the funding allocation from the higher education per student credit-hour funding formula attributable to inflation which must be transferred to UND - SMHS.

³The 2011-13 biennium amount shown for UND - SMHS includes \$100,000 of one-time funding from the general fund for a space utilization study. The 2013-15 biennium amount includes \$7,414,806 of one-time funding from the general fund for the health care workforce initiative. The 2015-17 biennium amount includes \$4.7 million of one-time funding from the general fund for residency positions and \$13,814,806 of one-time funding from the general fund for the health care workforce initiative.

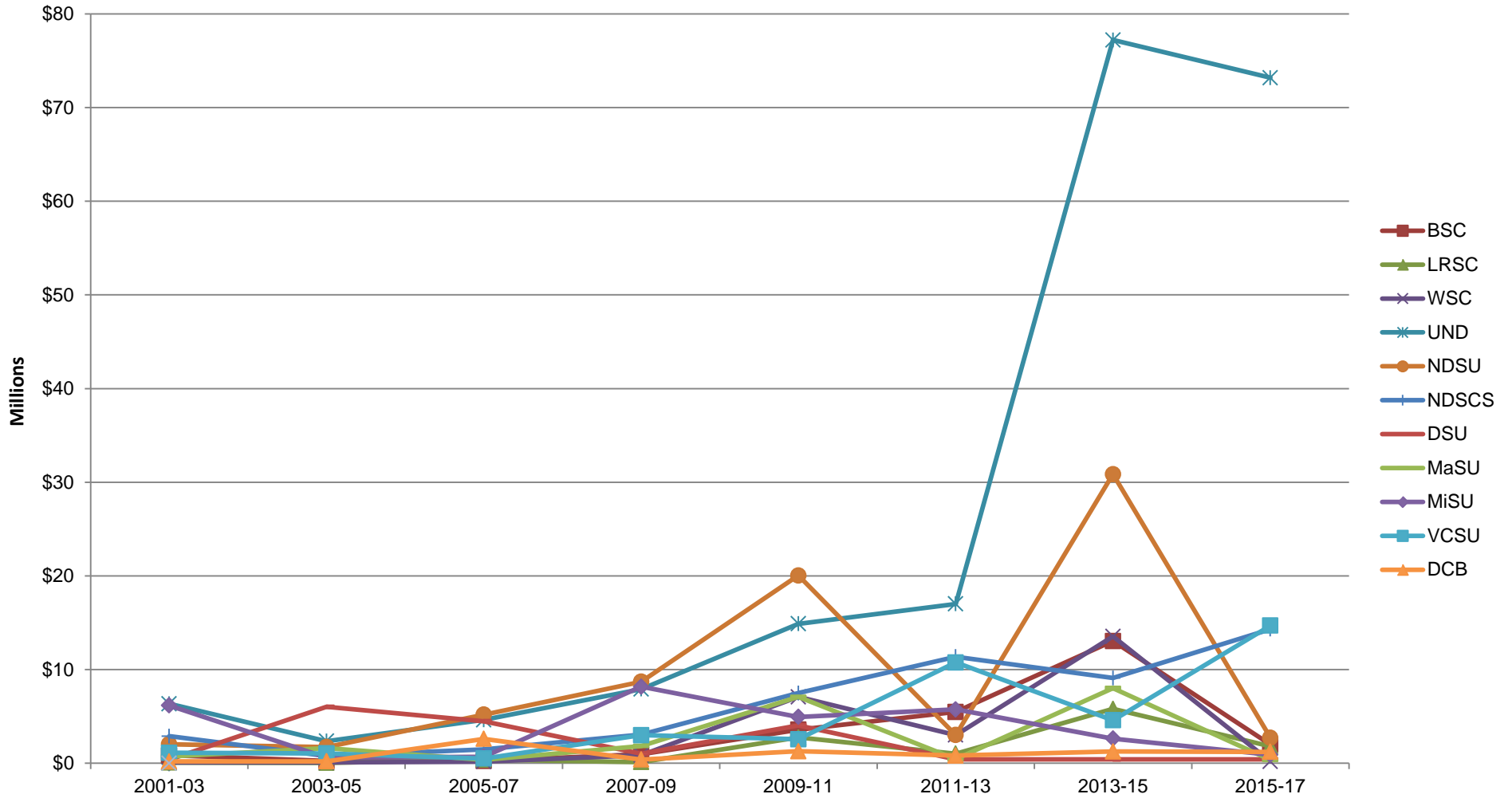
⁴The 2009-11 biennium amount shown for DSU includes \$350,000 of one-time funding from the general fund for operations. The 2011-13 biennium amount includes \$900,000 of one-time funding from the general fund for operations. The 2013-15 biennium amount includes \$800,000 of one-time funding from the general fund for operations. The 2015-17 biennium amount includes \$2 million of one-time funding from the student loan trust fund for leadership transition costs and \$800,000 of one-time funding from the general fund for the Theodore Roosevelt Center.

⁵The 2011-13 biennium amount shown for MaSU includes \$55,000 of one-time funding from the general fund for a drainage study.

⁶The 2013-15 biennium amount shown for MiSU includes \$2.5 million of one-time funding from the general fund for flood recovery.

Facilities Funding

The chart and schedule below detail appropriations since the 2001-03 biennium for capital spending at University System institutions. The amounts shown include one-time and ongoing appropriations from the general fund, the permanent oil tax trust fund, and state bonding authority for capital projects and repairs.



	2001-03	2003-05	2005-07	2007-09	2009-11	2011-13	2013-15	2015-17
BSC	\$846,000	\$250,000	\$243,481	\$961,892	\$3,584,118	\$5,475,606	\$13,052,673	\$1,992,673
LRSC	74,831	44,831	387,537	125,604	2,747,389	1,021,367	5,805,551	1,803,790
WSC	88,790	88,790	176,475	857,198 ⁴	7,078,477 ⁵	3,017,801	13,538,155	197,801
UND	6,352,921 ¹	2,362,136	4,632,099 ³	7,908,875	14,879,219 ⁵	17,008,712	77,201,566	73,171,566
NDSU	2,033,879 ¹	1,737,531	5,192,226 ³	8,709,161	20,048,042	3,004,927	30,852,244	2,732,244
NDSCS	2,883,500	773,500	1,489,332 ³	3,056,865 ⁴	7,487,475	11,371,045	9,098,258	14,310,379
DSU	393,962	6,026,009 ²	4,484,247 ³	1,018,763	4,045,862	409,078	409,078	409,078
MaSU	724,589	1,619,589 ²	358,994	1,839,963	7,077,439	443,505	8,022,642	358,992
MiSU	6,163,850 ¹	612,850	676,870	8,172,279	4,941,981	5,749,620	2,630,430	899,620
VCSU	1,115,334	1,050,634 ²	508,416	2,996,235 ⁴	2,563,337	10,756,735	4,593,472	14,697,319
DCB	187,663	209,663	2,609,725 ³	397,797 ⁴	1,286,746	815,507	1,260,827	1,212,796
Total	\$20,865,319	\$14,775,533	\$20,759,402	\$36,044,632	\$75,740,085	\$59,073,903	\$166,464,896	\$111,786,258

¹The amounts shown for the 2001-03 biennium include the following bonding authorizations:

- Bonding authority of \$3,990,785 for UND for state facility energy improvement projects.
- Bonding authority of \$296,348 for NDSU for state facility energy improvement projects.
- Bonding authority of \$5,551,000 for MiSU for a renovation of Old Main, to be repaid from the general fund.

²The amounts shown for the 2003-05 biennium include the following bonding authorizations:

- Bonding authority of \$5,632,047 for DSU for the Murphy Hall Phase 1 addition.
- Bonding authority of \$1,355,000 for MaSU for the steamline replacement Phase 2 project.
- Bonding authority of \$785,300 for VCSU for an elevator and emergency exit for Graichen Gymnasium.

³The amounts shown for the 2005-07 biennium include the following bonding authorizations:

- Bonding authority of \$2,331,554 for UND for state facility energy improvement projects.
- Bonding authority of \$3,500,000 for NDSU for a hazardous material handling and storage facility.
- Bonding authority of \$736,000 for NDSCS for an electrical distribution project.
- Bonding authority of \$4,100,557 for DSU for the Murphy Hall Phase 2 addition.
- Bonding authority of \$2,500,000 for DCB for the Thatcher Hall addition.

⁴The amounts shown for the 2007-09 biennium include the following appropriations from the permanent oil tax trust fund:

- \$700,000 for WSC for a service rig facility.
- \$1,670,420 for NDSCS for a steamline replacement project.
- \$2,200,000 for VCSU for a steamline replacement project.
- \$239,095 for DCB for a steamline replacement project.

⁵The amounts shown for the 2009-11 biennium include the following appropriations from the permanent oil tax trust fund:

- \$5,000,000 for WSC for the virtual center for career and technical education.
- \$5,400,000 for UND - SMHS Bismarck Family Practice Center.

Comparison of Operations Funding to Tuition Rate Increases

The chart below compares total state operations funding provided to University System institutions to average tuition rate increases at research institutions, 4-year regional institutions, and 2-year institutions since the 2001-02 academic year:

